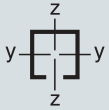


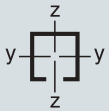
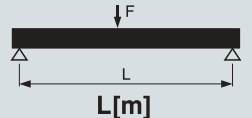
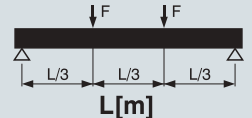
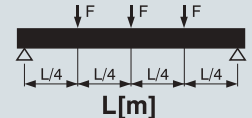
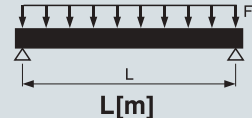
Technical Data

Support C Channel, Pre-galvanised

Technical data for sections:

Section 	Thickness [mm]	Available Rail Nuts	Section Weight [kg/m]	Cross Section [cm ²]	Resistance Moment		Moment of Inertia	
					Wy [cm ³]	Wz [cm ³]	Iy [cm ⁴]	Iz [cm ⁴]
27/18	1.2	M8, M10	0.62	0.84	0.34	0.71	0.36	0.96
28/30	1.8	M8, M10	1.25	1.59	1.02	1.49	1.77	2.09
30/15	1.8	M8, M10	0.96	1.33	0.35	0.98	0.28	1.47
38/40	2.0	M8, M10,M12	1.95	2.55	2.40	3.25	5.39	6.18
40/60	3.0	M8, M10,M12	3.83	4.98	6.58	6.77	21.56	13.54
38/40*D H-section	2.0	M8, M10,M12	3.90	5.10	6.85	6.66	27.42	12.67
40/60*D H-section	3.0	M8, M10,M12	7.66	9.96	19.51	13.54	117.08	27.08

Max. load capacities [N]

Section 	 L[m]				 L[m]				 L[m]				 L[m]			
	0.5	1.0	1.5	2.0	0.5	1.0	1.5	2.0	0.5	1.0	1.5	2.0	0.5	1.0	1.5	2.0
27/18	406	140	630	35	305	83	36	21	210	60	20	10	812	223	99	56
28/30	1226	608	401	223	983	458	260	137	640	318	171	99	2498	1123	637	328
30/15	507	144	64	36	339	85	37	21	249	68	34	16	924	231	102	57
38/40	3133	1566	1001	563	2351	1175	587	330	1520	770	485	321	6267	3134	1602	901
40/60	7668	4246	2741	1987	5611	2805	1892	1402	3741	1871	1336	935	14963	7480	5343	3741
38/40*D H-section	8897	4285	2842	2166	6730	3126	2143	1593	4560	2148	1452	1078	13127	7687	5301	3500
40/60*D H-section	14320	14320	8647	6631	10795	10795	6340	4886	7152	7152	4329	3197	27388	20431	12207	9202

Note:

- Refer to max. load capacities of the sections C Channel for larger spans in the Chapter of “Technical Information”. At the stated values, the permissible steel stress of 160 N/mm² must not exceeded and the maximum deflection under load L/200 must be taken into its own weight account.

Art. 540

EFIX-STRUT™ 41mm, Pre-galvanised & HDG

Advantages/Benefits

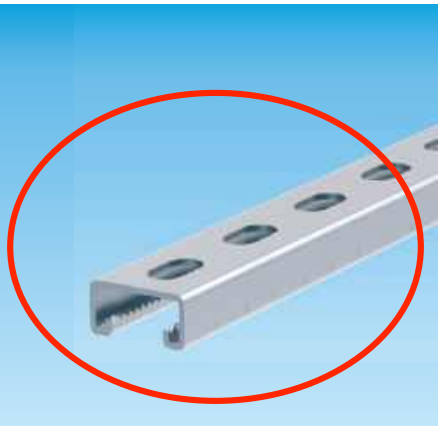
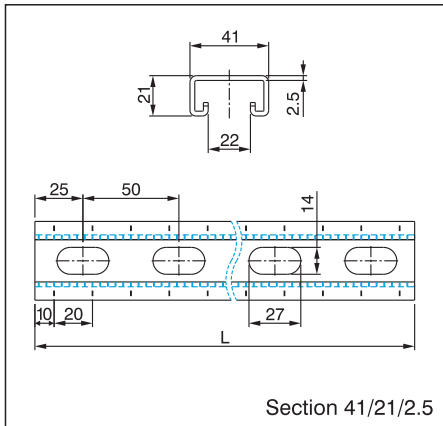
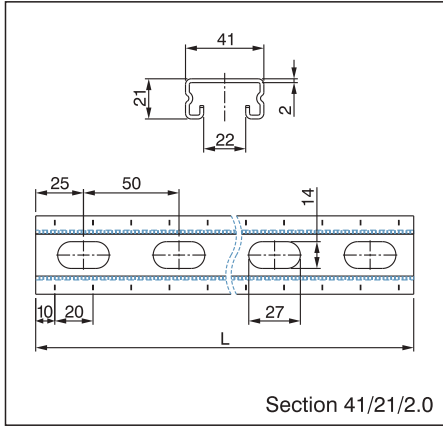
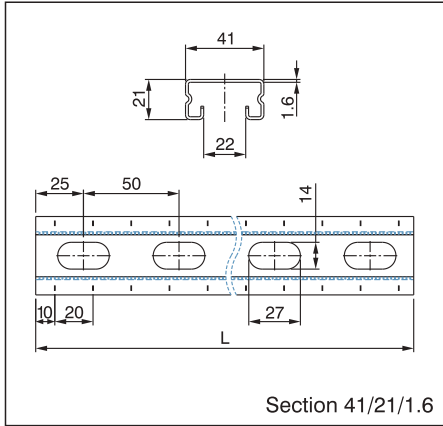
- Element for easily and efficiently pre-assembling crossbars, wall brackets and support structures on site or in workshops.
- Quick and efficient fixing of multiple and single pipes.
- High bending and tear-out strength due to optimized profile cross section.
- Also ideal as support structure for air ducts.
- Versatile options for wall, floor and ceiling installation.
- Assembly of versatile load-bearing construction is possible easily and securely because of specially notched connecting parts.
- Scale marks on the side simplify the alignment of fastening elements during the installation and facilitate measuring and cutting to the length of the section locally on site.

Technical Data

- Material:**
Steel 1.0332 acc. to DIN EN 10111
- Zinc plating:**
Pre-galvanised acc. to DIN EN 10327
Hot-dipped galv. acc. to DIN EN ISO 1461

Note

- * Available at other strut lengths subject to the special request.
- Refer to the chapter of Technical Information for load-bearing capacity of the struts.



Article Number		Section [mm]	Thickness [mm]	Length* L [m]	Weight [kg/m]	Pack Size** [pcs]
Pre-galvanised	Hot-dipped galv.					
0531 540 101	0531 540 104	41/21/1.6	1.6	2	1.18	—
0531 540 102	0531 540 105		1.6	3	1.18	—
0531 540 103	0531 540 106		1.6	6	1.18	—
0531 540 201	0531 540 204	41/21/2.0	2.0	2	1.56	—
0531 540 202	0531 540 205		2.0	3	1.56	—
0531 540 203	0531 540 206		2.0	6	1.56	—
0531 540 301	0531 540 304	41/21/2.5	2.5	2	1.88	—
0531 540 302	0531 540 305		2.5	3	1.88	—
0531 540 303	0531 540 306		2.5	6	1.88	—

** Pack size are variable depend on customer's each individual orders.

Art. 540

EFIX-STRUT™ 41mm, Pre-galvanised & HDG

Art. 540

EFIX-STRUT™ 41mm, Pre-galvanised & HDG

Advantages/Benefits

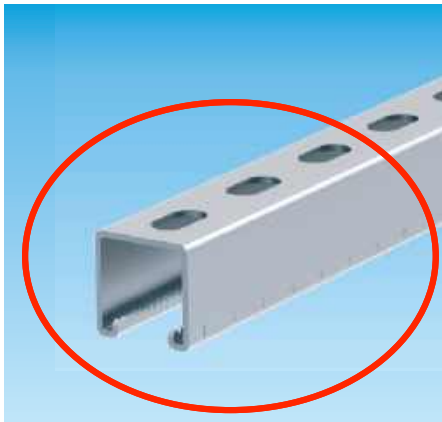
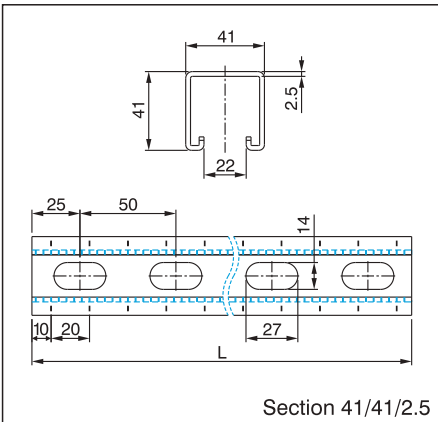
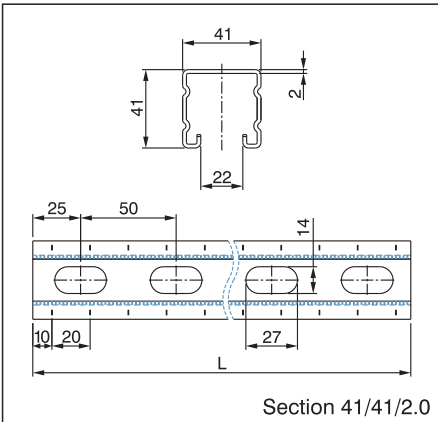
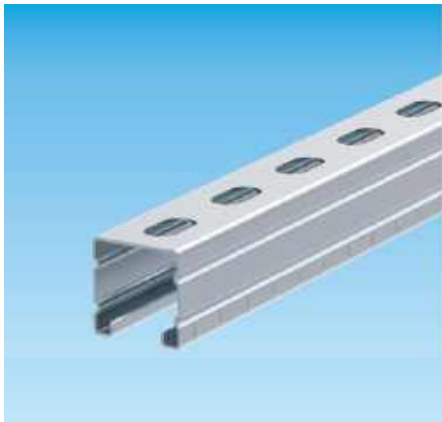
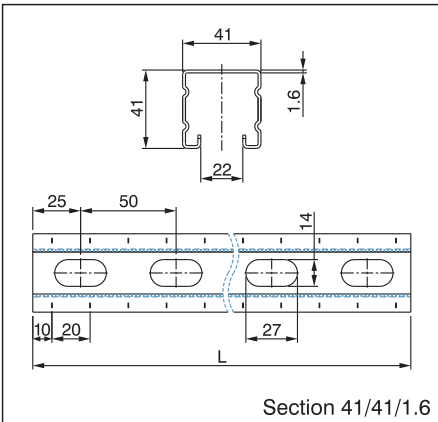
- Element for easily and efficiently pre-assembling crossbars, wall brackets and support structures on site or in workshops.
- Quick and efficient fixing of multiple and single pipes.
- High bending and tear-out strength due to optimized profile cross section.
- Also ideal as support structure for air ducts.
- Versatile options for wall, floor and ceiling installation.
- Assembly of versatile load-bearing construction is possible easily and securely because of specially notched connecting parts.
- Scale marks on the side simplify the alignment of fastening elements during the installation and facilitate measuring and cutting to the length of the section locally on site.

Technical Data

- **Material:**
Steel 1.0332 acc. to DIN EN 10111
- **Zinc plating:**
Pre-galvanised acc. to DIN EN 10327
Hot-dipped galv. acc. to DIN EN ISO 1461

Note

- * Available at other strut lengths subject to the special request.
- Refer to the chapter of Technical Information for load-bearing capacity of the struts.



Article Number		Section [mm]	Thickness [mm]	Length* L [m]	Weight [kg/m]	Pack Size** [pcs]
Pre-galvanised	Hot-dipped galv.					
0531 540 401	0531 540 404	41/41/1.6	1.6	2	1.68	—
0531 540 402	0531 540 405		1.6	3	1.68	—
0531 540 403	0531 540 406		1.6	6	1.68	—
0531 540 501	0531 540 504	41/41/2.0	2.0	2	2.23	—
0531 540 502	0531 540 505		2.0	3	2.23	—
0531 540 503	0531 540 506		2.0	6	2.23	—
0531 540 601	0531 540 604	41/41/2.5	2.5	2	2.67	—
0531 540 602	0531 540 605		2.5	3	2.67	—
0531 540 603	0531 540 606		2.5	6	2.67	—

** Pack size are variable depend on customer's each individual orders.

Advantages/Benefits

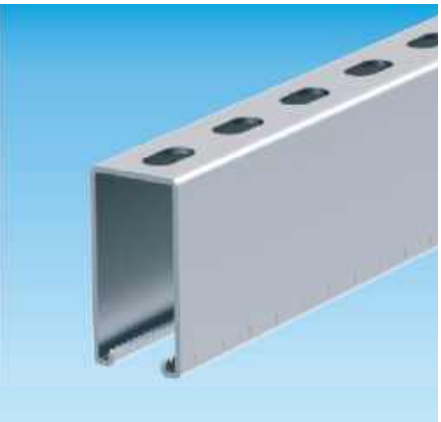
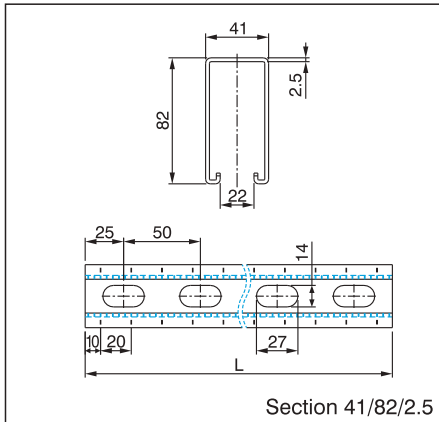
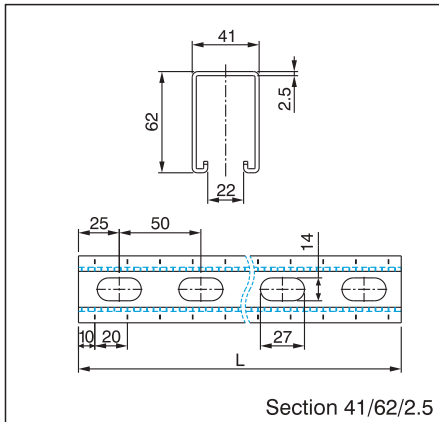
- Element for easily and efficiently pre-assembling crossbars, wall brackets and support structures on site or in workshops.
- Quick and efficient fixing of multiple and single pipes.
- High bending and tear-out strength due to optimized profile cross section.
- Also ideal as support structure for air ducts.
- Versatile options for wall, floor and ceiling installation.
- Assembly of versatile load-bearing construction is possible easily and securely because of specially notched connecting parts.
- Scale marks on the side simplify the alignment of fastening elements during the installation and facilitate measuring and cutting to the length of the section locally on site.

Technical Data

- **Material:**
Steel 1.0332 acc. to DIN EN 10111
- **Zinc plating:**
Pre-galvanised acc. to DIN EN 10327
Hot-dipped galv. acc. to DIN EN ISO 1461

Note

- * Available at other strut lengths subject to the special request.
- Refer to the chapter of Technical Information for load-bearing capacity of the struts.



Article Number		Section [mm]	Thickness [mm]	Length* L [m]	Weight [kg/m]	Pack Size** [pcs]
Pre-galvanised	Hot-dipped galv.					
0531 540 701	0531 540 704	41/62/2.5	2.5	2	3.50	—
0531 540 702	0531 540 705		2.5	3	3.50	—
0531 540 703	0531 540 706		2.5	6	3.50	—
0531 540 801	0531 540 804	41/82/2.5	2.5	2	4.23	—
0531 540 802	0531 540 805		2.5	3	4.23	—
0531 540 803	0531 540 806		2.5	6	4.23	—

** Pack size are variable depend on customer's each individual orders.

Art. 540

EFIX-STRUT™ Double Welded, Pre-galvanised & HDG

- Advantages/Benefits
- Element for easily and efficiently pre-assembling crossbars, wall brackets and support structures on site or in workshops.
 - Quick and efficient fixing of multiple and single pipes.
 - High bending and tear-out strength due to optimized profile cross section.
 - Also ideal as support structure for air ducts.
 - Versatile options for wall, floor and ceiling installation.
 - Assembly of versatile load-bearing construction is possible easily and securely because of specially notched connecting parts.
 - Scale marks on the side simplify the alignment of fastening elements during the installation and facilitate measuring and cutting to the length of the section locally on site.

- Technical Data
- **Material:**
Steel 1.0332 acc. to DIN EN 10111
 - **Zinc plating:**
Pre-galvanised acc. to DIN EN 10327
Hot-dipped galv. acc. to DIN EN ISO 1461

- Note
- * Available at other strut lengths subject to the special request.
 - Refer to the chapter of Technical Information for load-bearing capacity of the struts.

Article Number		Section [mm]	Thickness [mm]	Length* L [m]	Weight [kg/m]	Pack Size** [pcs]
Pre-galvanised	Hot-dipped galv.					
0531 540 901	0531 540 904	41/21*D/2.5	2.5	2	3.76	—
0531 540 902	0531 540 905		2.5	3	3.76	—
0531 540 903	0531 540 906		2.5	6	3.76	—
0531 540 111	0531 540 114	41/41*D/2.5	2.5	2	5.34	—
0531 540 112	0531 540 115		2.5	3	5.34	—
0531 540 113	0531 540 116		2.5	6	5.34	—

** Pack size are variable depend on customer's each individual orders.

Art. 540

EFIX-STRUT™ Double Welded, Pre-galvanised & HDG

- Advantages/Benefits
- Element for easily and efficiently pre-assembling crossbars, wall brackets and support structures on site or in workshops.
 - Quick and efficient fixing of multiple and single pipes.
 - High bending and tear-out strength due to optimized profile cross section.
 - Also ideal as support structure for air ducts.
 - Versatile options for wall, floor and ceiling installation.
 - Assembly of versatile load-bearing construction is possible easily and securely because of specially notched connecting parts.
 - Scale marks on the side simplify the alignment of fastening elements during the installation and facilitate measuring and cutting to the length of the section locally on site.

- Technical Data
- **Material:**
Steel 1.0332 acc. to DIN EN 10111
 - **Zinc plating:**
Pre-galvanised acc. to DIN EN 10327
Hot-dipped galv. acc. to DIN EN ISO 1461

- Note
- * Available at other strut lengths subject to the special request.
 - Refer to the chapter of Technical Information for load-bearing capacity of the struts.

Article Number		Section [mm]	Thickness [mm]	Length* L [m]	Weight [kg/m]	Pack Size** [pcs]
Pre-galvanised	Hot-dipped galv.					
0531 540 121	0531 540 124	41/62*D/2.5	2.5	2	7.00	—
0531 540 122	0531 540 125		2.5	3	7.00	—
0531 540 123	0531 540 126		2.5	6	7.00	—
0531 540 131	0531 540 134	41/82*D/2.5	2.5	2	8.46	—
0531 540 132	0531 540 135		2.5	3	8.46	—
0531 540 133	0531 540 136		2.5	6	8.46	—

** Pack size are variable depend on customer's each individual orders.